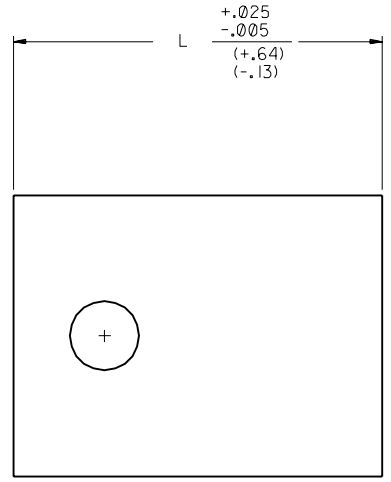
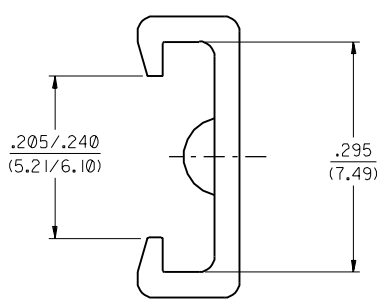


CONNECTOR C .098/(2.49)		
ENG NO. EDP NO.	CKTS	DIM L
7841-A04B 015-05-8046	04	.419 (10.64)
7841-A05B 015-05-8056	05	.518 (13.16)
7841-A06B 015-05-8066	06	.617 (15.67)
7841-A07B 015-05-8076	07	.715 (18.16)
7841-A08B 015-05-8086	08	.813 (20.65)
7841-A09B 015-05-8096	09	.912 (23.16)
7841-A10B 015-05-8106	10	1.010 (25.65)
7841-A11B 015-05-8116	11	1.108 (28.14)
7841-A12B 015-05-8126	12	1.207 (30.66)
7841-A13B 015-05-8136	13	1.305 (33.15)
7841-A14B 015-05-8146	14	1.404 (35.66)
7841-A15B 015-05-8156	15	1.502 (38.15)
7841-A16B 015-05-8166	16	1.601 (40.67)
7841-A17B 015-05-8176	17	1.699 (43.15)
7841-A18B 015-05-8186	18	1.797 (45.64)
7841-A19B 015-05-8196	19	1.896 (48.16)
7841-A20B 015-05-8206	20	1.994 (50.65)
7841-A21B 015-05-8216	21	2.093 (53.16)
7841-A22B 015-05-8226	22	2.191 (55.65)
7841-A23B 015-05-8236	23	2.289 (58.14)
7841-A24B 015-05-8246	24	2.388 (60.66)
7841-A25B 015-05-8256	25	2.486 (63.14)
7841-A26B 015-05-8266	26	2.585 (65.66)
7841-A27B 015-05-8276	27	2.684 (68.17)
7841-A28B 015-05-8286	28	2.782 (70.66)

CONNECTOR C .100/(2.54)		
ENG NO. EDP NO.	CKTS	DIM L
7841-A04A 015-05-8045	04	.420 (10.67)
7841-A05A 015-05-8055	05	.520 (13.21)
7841-A06A 015-05-8065	06	.620 (15.75)
7841-A07A 015-05-8075	07	.720 (18.29)
7841-A08A 015-05-8085	08	.820 (20.83)
7841-A09A 015-05-8095	09	.920 (23.37)
7841-A10A 015-05-8105	10	1.020 (25.91)
7841-A11A 015-05-8115	11	1.120 (28.45)
7841-A12A 015-05-8125	12	1.220 (30.99)
7841-A13A 015-05-8135	13	1.320 (33.53)
7841-A14A 015-05-8145	14	1.420 (36.07)
7841-A15A 015-05-8155	15	1.520 (38.61)
7841-A16A 015-05-8165	16	1.620 (41.15)
7841-A17A 015-05-8175	17	1.720 (43.69)
7841-A18A 015-05-8185	18	1.820 (46.23)
7841-A19A 015-05-8195	19	1.920 (48.77)
7841-A20A 015-05-8205	20	2.020 (51.31)
7841-A21A 015-05-8215	21	2.120 (53.85)
7841-A22A 015-05-8225	22	2.220 (56.39)
7841-A23A 015-05-8235	23	2.320 (58.93)
7841-A24A 015-05-8245	24	2.420 (61.47)
7841-A25A 015-05-8255	25	2.520 (64.01)
7841-A26A 015-05-8265	26	2.620 (66.55)
7841-A27A 015-05-8275	27	2.720 (69.09)
7841-A28A 015-05-8285	28	2.820 (71.63)

CONNECTOR C .100/(2.54)		
ENG NO. EDP NO.	CKTS	DIM L
7841-A03A 015-05-8035	03	.320 (8.18)

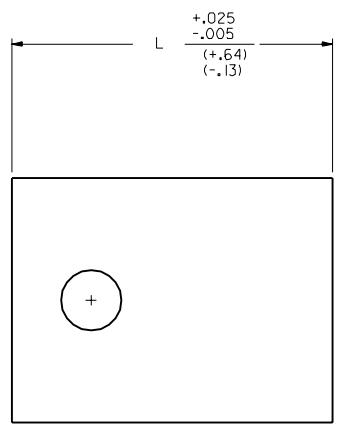
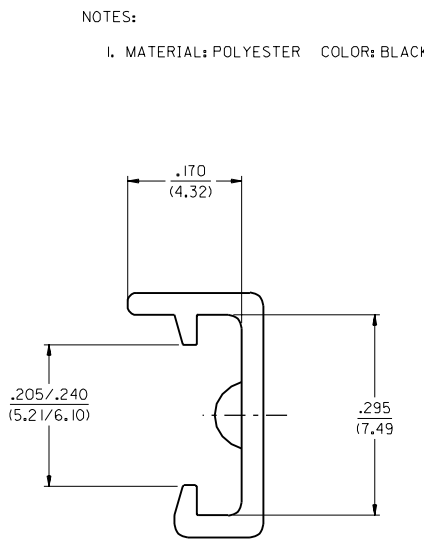
NOTES:  
I. MATERIAL: POLYESTER COLOR BLACK



7841

<table border="1"> <tr><td>2</td><td>Q</td></tr> <tr><td>1</td><td>Q1</td></tr> </table>		2	Q	1	Q1	<table border="1"> <tr><td>MFG.</td><td>SH.</td><td>REV.</td></tr> </table>		MFG.	SH.	REV.					
2	Q														
1	Q1														
MFG.	SH.	REV.													
<table border="1"> <tr><td>REL A03A</td><td>Q1</td></tr> <tr><td>UCR2002-0637</td><td></td></tr> <tr><td>1/28/02 SAMIEC</td><td></td></tr> </table>		REL A03A	Q1	UCR2002-0637		1/28/02 SAMIEC		<table border="1"> <tr><td>ADD TO CAD</td><td>Q</td></tr> <tr><td>ECR U60130</td><td></td></tr> <tr><td>8-28-95 SAMIEC</td><td></td></tr> </table>		ADD TO CAD	Q	ECR U60130		8-28-95 SAMIEC	
REL A03A	Q1														
UCR2002-0637															
1/28/02 SAMIEC															
ADD TO CAD	Q														
ECR U60130															
8-28-95 SAMIEC															
<table border="1"> <tr><td>LTR.</td><td>REVISIONS</td><td>LTR.</td><td>REVISIONS</td></tr> </table>		LTR.	REVISIONS	LTR.	REVISIONS	<table border="1"> <tr><td>LTR.</td><td>REVISIONS</td><td>LTR.</td><td>REVISIONS</td></tr> </table>		LTR.	REVISIONS	LTR.	REVISIONS				
LTR.	REVISIONS	LTR.	REVISIONS												
LTR.	REVISIONS	LTR.	REVISIONS												
<table border="1"> <tr><td>DRWG. BY: KSAMIEC</td><td>CHK'D BY: REDGLY</td></tr> <tr><td>APP'D BY: BLENZ</td><td>SCALE: :</td></tr> </table>		DRWG. BY: KSAMIEC	CHK'D BY: REDGLY	APP'D BY: BLENZ	SCALE: :	<table border="1"> <tr><td>DIMENSIONS SHOWN (METRIC) INCH</td><td>UNLESS OTHERWISE SPECIFIED TOLERANCES: ANGULAR ± 1/2°</td></tr> <tr><td>3 PLACE ± .014</td><td>INCH METRIC</td></tr> <tr><td>2 PLACE ±</td><td>± .38</td></tr> <tr><td>1 PLACE ---</td><td>±</td></tr> </table>		DIMENSIONS SHOWN (METRIC) INCH	UNLESS OTHERWISE SPECIFIED TOLERANCES: ANGULAR ± 1/2°	3 PLACE ± .014	INCH METRIC	2 PLACE ±	± .38	1 PLACE ---	±
DRWG. BY: KSAMIEC	CHK'D BY: REDGLY														
APP'D BY: BLENZ	SCALE: :														
DIMENSIONS SHOWN (METRIC) INCH	UNLESS OTHERWISE SPECIFIED TOLERANCES: ANGULAR ± 1/2°														
3 PLACE ± .014	INCH METRIC														
2 PLACE ±	± .38														
1 PLACE ---	±														
<table border="1"> <tr><td>FILE NAME: S7481X1.DWG</td><td>THIS DRAWING CONTAINS INFORMATION THAT IS PROPRIETARY TO MOLEX INC. AND SHOULD NOT BE USED WITHOUT WRITTEN PERMISSION.</td></tr> </table>		FILE NAME: S7481X1.DWG	THIS DRAWING CONTAINS INFORMATION THAT IS PROPRIETARY TO MOLEX INC. AND SHOULD NOT BE USED WITHOUT WRITTEN PERMISSION.	<table border="1"> <tr><td>REVISIONS</td><td>DATE</td></tr> <tr><td>1</td><td>08/28/95</td></tr> </table>		REVISIONS	DATE	1	08/28/95						
FILE NAME: S7481X1.DWG	THIS DRAWING CONTAINS INFORMATION THAT IS PROPRIETARY TO MOLEX INC. AND SHOULD NOT BE USED WITHOUT WRITTEN PERMISSION.														
REVISIONS	DATE														
1	08/28/95														
<table border="1"> <tr><td>MOLEX INCORPORATED</td><td>SHEET NO. 1 OF 2</td><td>DATE 08/28/95</td></tr> <tr><td>U.S.A.</td><td></td><td></td></tr> </table>		MOLEX INCORPORATED	SHEET NO. 1 OF 2	DATE 08/28/95	U.S.A.			<table border="1"> <tr><td>PART NO. SD-7841-****</td><td>DRWG. NO.</td></tr> </table>		PART NO. SD-7841-****	DRWG. NO.				
MOLEX INCORPORATED	SHEET NO. 1 OF 2	DATE 08/28/95													
U.S.A.															
PART NO. SD-7841-****	DRWG. NO.														

	13	12	11	10	9	8	7	6	5	4	3	2	1									
	CONNECTOR € .098/(2.49)			CONNECTOR € .100/(2.54)			NOTES: I. MATERIAL: POLYESTER COLOR: BLACK															
J	ENG NO. EDP NO.	CKTS	DIM L	ENG NO. EDP NO.	CKTS	DIM L									J							
	7841-B04B 015-05-8048	04	.419 (10.64)	7841-B04A 015-05-8047	04	.420 (10.67)																
I	7841-B05B 015-05-8058	05	.518 (13.16)	7841-B05A 015-05-8057	05	.520 (13.21)																
	7841-B06B 015-05-8068	06	.617 (15.67)	7841-B06A 015-05-8067	06	.620 (15.75)																
H	7841-B07B 015-05-8078	07	.715 (18.16)	7841-B07A 015-05-8077	07	.720 (18.29)																
	7841-B08B 015-05-8088	08	.813 (20.65)	7841-B08A 015-05-8087	08	.820 (20.83)																
	7841-B09B 015-05-8098	09	.912 (23.16)	7841-B09A 015-05-8097	09	.920 (23.37)																
G	7841-B10B 015-05-8108	10	1.010 (25.65)	7841-B10A 015-05-8107	10	1.020 (25.91)																
	7841-B11B 015-05-8118	11	1.108 (28.14)	7841-B11A 015-05-8117	11	1.120 (28.45)																
	7841-B12B 015-05-8128	12	1.207 (30.66)	7841-B12A 015-05-8127	12	1.220 (30.99)																
F	7841-B13B 015-05-8138	13	1.305 (33.15)	7841-B13A 015-05-8137	13	1.320 (33.53)																
	7841-B14B 015-05-8148	14	1.404 (35.66)	7841-B14A 015-05-8147	14	1.420 (36.07)																
E	7841-B15B 015-05-8158	15	1.502 (38.15)	7841-B15A 015-05-8157	15	1.520 (38.61)																
	7841-B16B 015-05-8168	16	1.601 (40.67)	7841-B16A 015-05-8167	16	1.620 (41.15)																
	7841-B17B 015-05-8178	17	1.699 (43.15)	7841-B17A 015-05-8177	17	1.720 (43.69)																
D	7841-B18B 015-05-8188	18	1.797 (45.64)	7841-B18A 015-05-8187	18	1.820 (46.23)																
	7841-B19B 015-05-8198	19	1.896 (48.16)	7841-B19A 015-05-8197	19	1.920 (48.77)																
	7841-B20B 015-05-8208	20	1.994 (50.65)	7841-B20A 015-05-8207	20	2.020 (51.31)																
C	7841-B21B 015-05-8218	21	2.093 (53.16)	7841-B21A 015-05-8217	21	2.120 (53.85)																
	7841-B22B 015-05-8228	22	2.191 (55.65)	7841-B22A 015-05-8227	22	2.220 (56.39)																
	7841-B23B 015-05-8238	23	2.289 (58.14)	7841-B23A 015-05-8237	23	2.320 (58.93)																
B	7841-B24B 015-05-8248	24	2.388 (60.66)	7841-B24A 015-05-8247	24	2.420 (61.47)																
	7841-B25B 015-05-8258	25	2.486 (63.14)	7841-B25A 015-05-8257	25	2.520 (64.01)																
	7841-B26B 015-05-8268	26	2.585 (65.66)	7841-B26A 015-05-8267	26	2.620 (66.55)																
A	7841-B27B 015-05-8278	27	2.684 (68.17)	7841-B27A 015-05-8277	27	2.720 (69.09)																
	7841-B28B 015-05-8288	28	2.782 (70.66)	7841-B28A 015-05-8287	28	2.820 (71.63)																
	13	12	11	10	9	8									7	6	5	4	3	2	1	



DIMENSIONS SHOWN (METRIC) INCH		▽ = 0 ▼ = 0		REVISE ONLY ON CAD SYSTEM	
UNLESS OTHERWISE SPECIFIED TOLERANCES: ANGULAR ± 1/2°					
INCH		METRIC			
3 PLACE	± .014	---			
2 PLACE	±	0.13			
1 PLACE	---	±			
DRAFT WHERE APPLICABLE MUST REMAIN WITHIN DIMENSIONS					
DRG. BY: KSAMIEC	CHK'D. BY: REDDLEY	MFG.   SH.   REV.			
APP'D. BY: BLENZ	SCALE: 1:1	TITLE: IDT COVER			
SEE SHEET 1		MOLX INCORPORATED		SHEET NO. 2 DATE 08/28/95	
SEE CHART		SD-7841-****		PART NO.	
FILE NAME: 57841X2.DGN		THIS DRAWING CONTAINS INFORMATION THAT IS PROPRIETARY TO MOLEX INC. AND SHOULD NOT BE USED WITHOUT WRITTEN PERMISSION.		DWN. SIZE: C C	